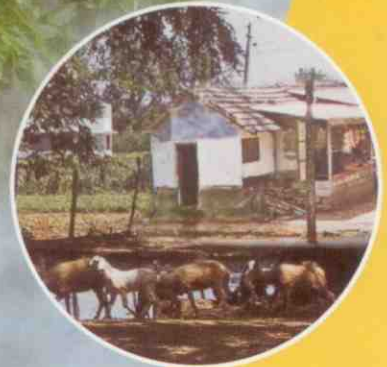


Mosquito menace?



Rural



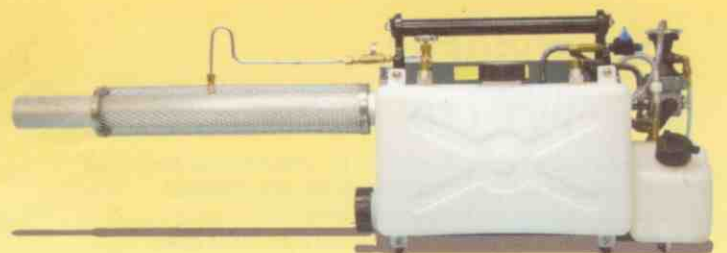
Defence



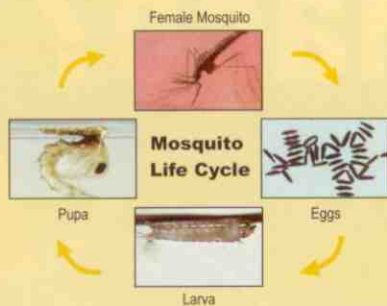
Urban

Here's an effective solution

Introducing **Fogger XL**
Portable Thermal Fogging Machine



Mosquitoes breed in areas where stagnant water bodies exist: pools and puddles formed by rainwater, open overhead tanks, septic tanks, gutters, swamps, and so on. In these environments, mosquitoes go through their entire life cycle, from egg to larva to pupa and, finally, adult mosquito.



In Mosquito Life cycle stages Egg & Pupa are dormant and non feeding. Hence no control measures are effective at this stage. Controlling mosquito larva would help controlling the birth of new mosquito but it would not address the root cause of new eggs and new larva. And it is challenging to treat every stagnant water body with larvicides.

That's the reason controlling Adult Mosquito through scientific use of Fogging makes a wise choice. Fogging operations destroys adult mosquito which has capacity to multiply and regenerate. And Fogging operation can

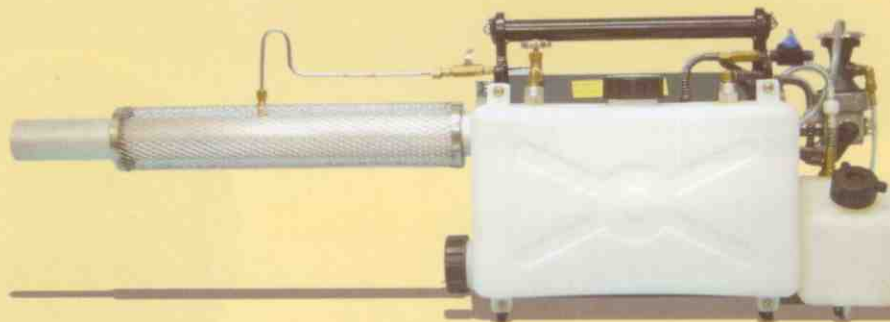
get this job done very faster and cost effectively.

Controlling the adult mosquito means addressing the root cause.

Enter **Foggers XL**, a machine built around your needs. The **Foggers XL** is a power performer. Easy to operate. Lightweight. And ready to spring into action the moment you turn it on! Say hello to Foggers and goodbye to mosquitoes - and malaria, dengue and brain fever as well!



And it is challenging to treat every



Fogger XL

Portable Thermal Fogging Machine

ADVANTAGE

- Petal Valve-based carburetor, backed by a powerful battery-operated air pump ensures instant, fully-automatic start-up
- Operates for a full hour, consuming only 1.2 lt. petrol
- Formulation Tank cleaning facility
- Fog output capacity of 20 Lt. per hour
- Adjustable fog output valve and fog on/off cutoff valve
- MSV - Manual Safety Valve for automatic switch off during an emergency
- WHO / ISI standards

OPTIONAL ACCESSORIES

- Stainless steel formulation tank and fuel tanks
- Shoulder-mounted carry bag
- Cycle / Tricycle mountable attachment

Name	Fogger XL portable shoulder mount Thermal Fogging Machine.
Type of Machine	Thermal Aerosol Fog, petroleum based resonate pulse Jet principle
Model No.	Fogger XL, Series 1
Starting	Automatic Electric Start
Performance of engine	14.66 kW/Hr / 20 hp/hr.
Solution Tank Output	0-20 Lt./Hr.
Safety Feature	Manual Shut Off valve for fog output control.
Solution Tank Capacity	5.0 Liters Plastic Tank.
Fuel Tank Capacity	1.2 Liters Plastic Tank.
Fuel Consumption	1.2 Liters per hr.
Ignition	Buzzer Coil
Batteries Size	12 v DC - (Re-Chargeable Battery)
Weight Empty	7.30 kg only.
Dimension (cm)	100 (l) x 25 (w) x 34 (h)
Warranty	Six month limited warranty

Specifications and technical details are subject to change without prior notice. At Foggers India, R&D is a continuous process. Hence, we reserve the right to improve/change/eliminate the product or its components as desired